

PriceLineTMDAILY

Enerdata Ltd.
Energy Information
Services

Natural Gas Price & Market Report

Volume 7, Number 349

Friday March 3, 2006

Daily Trading Report Canadian Natural Gas

Intra-Alberta

Intra-Alberta One-Day prices were up on Thursday. Prices increased modestly tracking the slight jump in NYMEX. Total gas in storage is 272.0 bcf or 51.05% full while last year at this time, storage inventory was 169.1 bcf or 35.00% full; this is causing much concern in the market as heating season will draw to a close soon. However, above normal temperatures are expected for the summer and the industry is preparing itself for another hurricane season. The month of March has started off with many weather warnings issued from Environment Canada but the short blast of cold weather has impacted prices just slightly.

Trading in the range of \$5.8400 to \$6.0250, Thursday's weighted average was \$5.9444, up 7.45 cents from the prior day's average price of \$5.8699.

Intra-Alberta one-month prices traded in the range of \$5.8100 to \$6.0300 Thursday averaging \$5.9512.

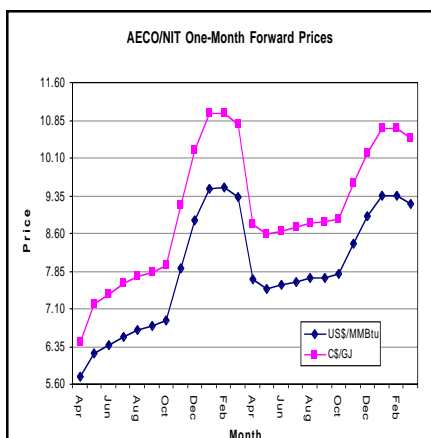
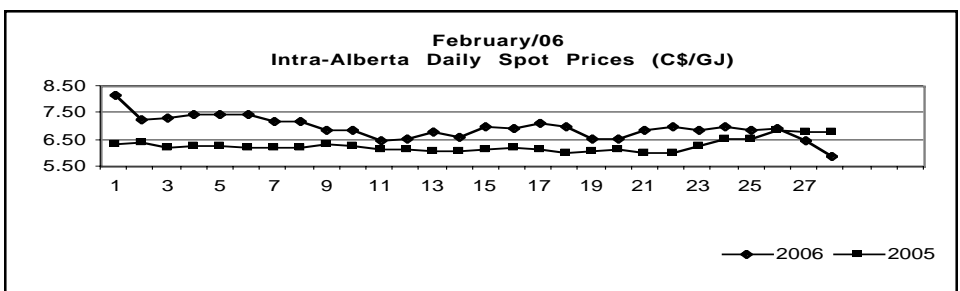
Intra-Alberta forward prices ended higher for Thursday. April term gas averaged \$6.1225. May prices closed at \$6.1825. Mar/06 gas year price averaged \$6.3075 and Apr/06 summer break price closed at \$8.8525.

At Station 2, B.C., prices traded between \$5.3500 and 5.5500, averaging \$5.4732, up 16.81 cents from the prior day's closing price.

The NYMEX Henry Hub April futures contract ended Thursday up 2.70 cents to close at \$6.760.

Daily Canadian Gas Price Index:						Thursday March 2, 2006	
	Low	High	Index	Last	Change	US\$	
Intra-Alberta (C\$/GJ)							
One-Day	5.8400	6.0250	5.9444	5.8699	0.0745	MMBtu	
Near-Month	5.8100	6.0300	5.9512	5.8643	0.0869	5.5455	
May	6.1125	6.1325	6.1225	6.0700	0.0525	5.7051	
June	6.1725	6.1925	6.1825	6.2525	-0.0700	5.7610	
July	6.3025	6.3225	6.3125	6.2975	0.0150	5.8821	
Apr/06-Oct/06sb	6.2975	6.3175	6.3075	6.2225	0.0850	5.8775	
Nov/06-Mar/07wb	8.8425	8.8625	8.8525	8.7875	0.0650	8.2490	
Alberta Border (C\$/GJ)							
One-Day	5.9100	6.1200	6.0245	5.9539	0.0706	5.6138	
One-Month	5.9575	6.1775	6.0987	6.0118	0.0869	5.6829	
Station 2 (C\$/GJ)							
One-Day	5.3500	5.5500	5.4732	5.3051	0.1681	5.1001	
EXPORT One-Day (US\$/MMBTU)							
						C\$/GJ	
Dawn	6.5800	6.7600	6.6812	6.5962	0.0850	7.1700	
Iroquois	8.3000	9.0000	8.7048	8.0032	0.7016	9.3417	
Niagara	5.0400	5.1900	5.1150	5.0350	0.0800	5.4892	
Sumas	5.5500	5.6500	5.6150	5.4789	0.1361	6.0258	
Kingsgate	5.6200	5.6200	5.6200	5.5000	0.1200	6.0312	
Emerson	6.0300	6.1100	6.0694	5.9820	0.0874	6.5135	
Ex. Rate (\$US)	0.8832						

Source: Enerdata Ltd. Volume and Price Survey
Note: All prices reported were transacted on the above date. Index prices are weighted (by volume) average prices. Intra-Alberta One-Day gas prices flow on the same transaction date. All other One-Day prices reported have flow times commencing the day following the transaction date.



See page 5 for AECO/NIT Forward Prices

Daily Market Summary

- Intra-Alberta One-Day prices were up 7.45 cents to close at \$5.9444.
- Intra-Alberta one-month prices averaged \$5.9512, up 8.69 cents from the prior day's average.
- Station 2 prices up 16.81 cents to close at a weighted average of \$5.4732.
- Dawn averaged \$6.6812 and Niagara averaged \$5.1150, a change of 8.00 cents from the previous trading day.
- Sumas prices were up 13.61 cents averaging \$5.6150 while Kingsgate prices averaged \$5.6200.
- Malin prices were up 7.95 cents to close at a weighted average of \$5.6060. Stanfield prices closed the day at \$5.5860.
- Chicago and Ventura prices were up - Chicago traded as high as \$6.3820 before settling at \$6.2460 while Ventura prices averaged \$5.9210 up 15.45 cents.

U.S. Daily Prices

U.S. Daily prices were up on Thursday. Prices went up as Nymex natural gas gained 2.7 cents, or 0.4 percent, to \$6.76, after the Energy Department released their weekly storage report. U.S. natural-gas stocks fell by 171 bcf, exceeding the market's expectations. While cold weather last week helped yield the biggest drop in stored supplies since the second week of December, analysts don't expect the trend to continue. "This week right now is warmer than average," said an expert.

Henry Hub traded between \$6.6400 and \$6.8420 Thursday averaging \$6.7410, up 11.95 cents from the previous trading day's weighted average of \$6.6215. U.S. Gulf prices traded between \$5.1700 and \$6.4020. Midwest prices averaged \$6.0835 on Thursday, trading between \$5.8800 and \$6.3820.

In the Northeast region, deals in Transco Zone 6 (NY) were done around the \$8.6460 range. Some deals were done as high as \$8.9320, up 86.45 cents from the prior day's average.

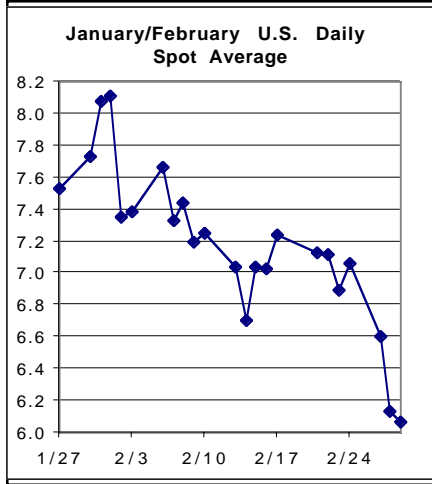
In the Western region, California border prices traded between \$4.8984 and \$5.5920, giving it a one-day average of \$5.4616.

NYMEX natural gas futures ended Thursday with April's contract up 2.70 cents to close at \$6.760 in the day's trading session.

Canadian Weather Forecast (Celsius)				
	B.C.	Alta.	S.Ont.	Que.
<i>Saturday</i>				
Low	3	-15	-10	-5
High	9	-7	0	-3
<i>Sunday</i>				
Low	4	-10	-9	-10
High	9	0	1	-2
<i>Monday</i>				
Low	6	-5	-9	-12
High	8	7	1	-4
Normals for the Period				
Low	2	-11	-8	-13
High	9	1	1	-3
Source: Environment Canada				

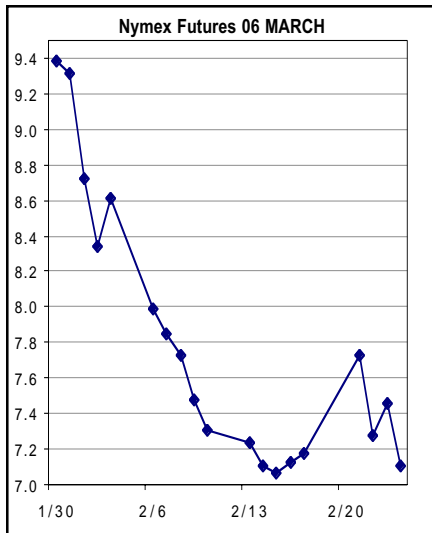
U.S. Weather Forecast (Fahrenheit)				
		Sat.	Sun.	Mon.
Chicago	Low	26	31	28
	High	38	37	39
L.A.	Low	46	50	50
	High	64	68	62
New York	Low	29	28	31
	High	38	41	42
New Orleans	Low	51	53	54
	High	67	69	73
Denver	Low	34	36	40
	High	61	59	65
Dallas	Low	52	54	52
	High	70	70	77
Source: Intellicast				

Daily U.S. Gas Price Index (US\$/MMBtu):			Thursday March 2, 2006		
	Low	High	Index	Last	Chg.
<i>Louisiana Average</i>	5.9200	6.8420	6.5606	6.4859	0.0746
ANR	6.4400	6.5520	6.4960	6.4065	0.0895
Columbia, Onshore	6.6300	6.7320	6.6810	6.5965	0.0845
Columbia, Mainline	6.7400	6.7720	6.7560	6.6415	0.1145
FGT Z1	6.5100	6.5070	6.5085	6.5665	-0.0580
FGT Z2	6.6100	6.6120	6.6110	6.5715	0.0395
FGT Z3	6.5100	6.5320	6.5210	6.5965	-0.0755
Henry Hub	6.6400	6.8420	6.7410	6.6215	0.1195
Transco Z4	6.7700	6.7820	6.7760	6.5965	0.1795
NGPL (La.)	5.9200	6.3220	6.1210	6.0415	0.0795
Sonata	6.6100	6.7070	6.6585	6.5715	0.0870
Tennessee, 500 Leg	6.5500	6.5620	6.5560	6.4315	0.1245
Tennessee, 800 Leg	6.4300	6.5320	6.4810	6.4415	0.0395
Texas E. (WLA)	6.4000	6.5320	6.4660	6.3915	0.0745
Texas E. (ELA)	6.5150	6.5520	6.5335	6.4765	0.0570
Texas Gas SL	6.3600	6.4020	6.3810	6.2665	0.1145
Transco Z3, St. 50, 62, 65	6.6300	6.7720	6.7010	6.6265	0.0745
Trunkline WLA	6.4100	6.5820	6.4960	6.4515	0.0445
Trunkline ELA	6.5600	6.6520	6.6060	6.4515	0.1545
<i>Texas Average</i>	5.1700	6.4020	5.8132	5.7494	0.0638
Permian Basin Average	5.1700	5.4820	5.3210	5.3028	0.0183
El Paso	5.1700	5.4220	5.2960	5.2915	0.0045
Tex Intra. Waha	5.2100	5.4820	5.3460	5.3140	0.0320
East Texas Average	5.9000	6.4020	6.1038	6.0290	0.0748
Texas Eastern (ETX)	5.9325	6.0620	5.9973	5.9365	0.0607
Texas Gas (Z1)	6.3100	6.4020	6.3560	6.1665	0.1895
Houston Ship Channel	6.0100	6.0820	6.0460	5.9865	0.0595
Katy Hub Tailgate	5.9000	6.1320	6.0160	6.0265	-0.0105
South Texas Average	5.9325	6.0842	6.0147	5.9164	0.0982
Aqua Dulce Hub	5.9642	6.0570	6.0106	5.9123	0.0982
NGPL (STX)	5.9500	6.0420	5.9960	5.8240	0.1720
Tennessee	6.0100	6.0670	6.0385	5.9765	0.0620
Texas Eastern (STX)	5.9325	6.0620	5.9973	5.9365	0.0607
Trunkline South	5.9800	6.0800	6.0309	5.9327	0.0982
<i>Oklahoma/Kansas Average</i>	5.3500	5.9820	5.5244	5.3811	0.1433
ANR	5.4600	5.5420	5.5010	5.3715	0.1295
NGPL (Midcont.)	5.3600	5.5820	5.4710	5.3665	0.1045
NorAm (East)	5.3600	5.6320	5.4960	5.3465	0.1495
Noram (West)	5.3500	5.6220	5.4860	5.3265	0.1595
Demarcation	5.7650	5.9820	5.8735	5.7515	0.1220
Northern (Mid 13)	5.3910	5.5490	5.4701	5.3268	0.1433
Northern (Mid11)	5.4010	5.5610	5.4810	5.3378	0.1433
Northern (Mid 10)	5.3950	5.5580	5.4765	5.3332	0.1433
ONG	5.5100	5.5320	5.5210	5.3415	0.1795
PEPL	5.3600	5.6320	5.4960	5.3465	0.1495
Williams	5.4350	5.5570	5.4960	5.3440	0.1520
<i>New Mexico Average</i>	5.1400	5.3120	5.2260	5.1815	0.0445
El Paso Bondad	5.1400	5.2620	5.2010	5.1665	0.0345
TW SJ (Blanco)	5.1900	5.3120	5.2510	5.1965	0.0545
<i>Rockies Average</i>	5.2100	5.6420	5.3940	5.2935	0.1005
Stanfield	5.5300	5.6420	5.5860	5.5115	0.0745
Opal	5.2100	5.4520	5.3310	5.2465	0.0845
CIG (N. System)	5.3000	5.4220	5.3610	5.2315	0.1295
DJ Basin	5.3000	5.4220	5.3610	5.2315	0.1295
Northwest, domestic	5.2100	5.4520	5.3310	5.2465	0.0845



	Current Month	Last Month
El Paso San Juan	6.05	6.75
Henry Hub	7.13	8.48
Columbia Gulf	7.15	8.40
Rockies	5.95	6.45
Appalachia	7.44	8.70
Calif. Border	6.47	6.75
Texas Gas	7.04	7.80
ANR Southwest	6.20	6.75
Chicago	6.88	7.92

Source : Canadian Gas Price Reporter



Note: The Daily US Gas Price Index is compiled by the Enerdata Ltd. Volume and Price Survey. All prices reported were transacted on the date highlighted in the table. Index prices are weighted (by volume) average prices. All One-Day prices have flow times commencing the following day of the transaction date. Prices indicated by an * are prices from the last traded session.

	7.0700	7.1720	7.1143	7.0582	0.0562
Appalachia Average	7.0700	7.1720	7.1143	7.0582	0.0562
CNG, North Point	7.0800	7.1320	7.1060	7.0715	0.0345
CNG, South Point	7.0700	7.1620	7.1160	7.0815	0.0345
Columbia, App.	7.0700	7.1720	7.1210	7.0215	0.0995
California Average	4.8984	5.6620	5.4616	5.4421	0.0195
Northern California Average	5.5500	5.6620	5.6060	5.5265	0.0795
Malin	5.5500	5.6620	5.6060	5.5265	0.0795
Southern California Average	4.8984	5.5920	5.3171	5.3576	-0.0405
Cal Border, Topock	5.4300	5.5920	5.5110	5.5515	-0.0405
Cal Border, KRS	5.3800	5.5420	5.4610	5.5015	-0.0405
Cal Border, Wheeler Ridge	4.8980	5.0600	4.9794	5.0199	-0.0405
Midwest Average	5.8800	6.3820	6.0835	5.8840	0.1995
Ventura	5.8800	5.9620	5.9210	5.7665	0.1545
Chicago	6.1100	6.3820	6.2460	6.0015	0.2445
NGPL Iowa-III. receipt	5.9950	6.1720	6.0835	5.8840	0.1995
Michigan Average	6.6000	6.6620	6.6310	6.5190	0.1120
Mich-Consum. Power	6.6000	6.6620	6.6310	6.5190	0.1120
Mich-Mich Con	6.6000	6.6620	6.6310	6.5190	0.1120
Northeast Average	6.2900	9.3682	8.0117	7.6554	0.3563
Texas E., M-3	7.3600	7.5020	7.4310	7.2665	0.1645
Transco Zone 6 (non NY)	7.4500	7.5520	7.5010	7.3165	0.1845
Transco Zone 6 (NY)	8.3600	8.9320	8.6460	7.7815	0.8645
New England Citygate	9.1200	9.3700	9.2435	8.5140	0.7295
Dracut	7.6750	7.8320	7.7535	8.2165	-0.4630
Algonquin	9.0600	9.2820	9.1710	8.4415	0.7295
Alliance	6.2900	6.3820	6.3360	6.0515	0.2845
US Daily Average	4.8984	9.3682	6.1820	6.0650	0.1170

Source: Enerdata Ltd. Volume and Price Survey
 Note: All prices reported were transacted on the above date. Index prices are weighted (by volume) average prices. All One-Day prices reported have flow times commencing the day following the transaction date.

Mar-2-06	Nymex Henry Hub					Current Month		NYMEX Trading Summary		
	High	Low	Settle	Last	Chg.	Trading Summary	Month	Avg.	3-Day	
06APR	6.920	6.540	6.760	6.733	0.027	Date	Settle	Jan-04	6.399	6.224
06MAY	7.110	6.760	6.960	6.940	0.020	30-Jan	9.389	Feb-04	6.364	5.739
06JUN	7.290	6.980	7.150	7.115	0.035	31-Jan	9.316	Mar-04	5.376	5.118
06JUL	7.500	7.190	7.335	7.290	0.045	1-Feb	8.723	Apr-04	5.504	5.365
06AUG	7.600	7.320	7.468	7.417	0.051	2-Feb	8.347	May-04	5.755	5.858
06SEP	7.700	7.390	7.561	7.502	0.059	3-Feb	8.613	Jun-04	6.337	6.690
06OCT	7.790	7.500	7.673	7.607	0.066	6-Feb	7.995	Jul-04	6.367	6.326
06NOV	8.900	8.630	8.763	8.722	0.041	7-Feb	7.858	Aug-04	6.054	5.998
06DEC	9.860	9.620	9.768	9.742	0.026	8-Feb	7.735	Sep-04	5.562	5.190
07JAN	10.530	10.330	10.453	10.432	0.021	9-Feb	7.479	Oct-04	5.058	5.459
07FEB	10.480	10.330	10.458	10.437	0.021	10-Feb	7.316	Nov-04	7.195	7.973
07MAR	10.270	10.150	10.263	10.242	0.021	13-Feb	7.243	Dec-04	7.706	7.177
07APR	8.550	8.430	8.523	8.502	0.021	14-Feb	7.114	NYMEX Trading Summary 1992-2003		
07MAY	8.360	8.230	8.343	8.322	0.021	15-Feb	7.066	1992		1.770
07JUN	8.420	8.380	8.403	8.382	0.021	16-Feb	7.134	1993		2.150
07JUL	8.510	8.460	8.478	8.457	0.021	17-Feb	7.182	1994		1.920
07AUG	8.560	8.450	8.548	8.527	0.021	21-Feb	7.731	1995	1.630	1.62
07SEP	8.600	8.552	8.573	8.552	0.021	22-Feb	7.283	1996	2.410	2.550
Strips	Avg.	Avg.	Avg.	Avg.	Avg.	23-Feb	7.458	1997	2.590	2.630
3 Months	7.107	6.760	6.957	6.929	0.027	24-Feb	7.112	1998	2.220	2.140
Apr/06-Oct/06	7.416	7.097	7.272	7.229	0.043			1999	2.270	2.270
12 Month	8.496	8.228	8.384	8.348	0.036			2000	3.760	3.910
18 Month	8.497	8.291	8.416	8.385	0.031			2001	4.544	4.384
Summer*	7.416	7.097	7.272	7.229	0.043			2002	3.165	3.252
Winter*	10.008	9.812	9.941	9.915	0.026	Average	7.794	2003	5.355	5.441
Sum/Win**	-2.592	-2.715	-2.669	-2.686	0.017	3-Day	7.284			

* Summer includes Apr-Oct, Winter includes Nov-Mar

** Summer, Winter spread.

Daily Market News

Canadian Gas Prices Up Slightly On Nymex Gain

Canadian natural gas prices rose in tandem with a small recovery on Nymex. The benchmark AECO hub rose to a range of C\$5.84-C\$6.025/GJ, up as much as five Canadian cents, as Nymex futures settled 2.7 US cents up at US\$6.76/MMBtu. Levels of working gas in Canadian storage facilities fell 21 bcf, or 7.2%, to 272 bcf in the week ended Feb. 24, Canadian Enerdata reported Thursday. Natural gas inventories fell 12.6 bcf to 131.4 bcf in the east and fell 8.5 bcf to 140.6 bcf in the west. The draws left inventories 52.35% full in the east, 49.89% full in the west and 51.05% full overall, compared with 55% full a week ago. Canadian inventories were 35% full this time last year, at 169.1 bcf, Enerdata reported.

Nymex Gas Gets No Boost From Bullish EIA Report

Natural gas futures on the New York Mercantile Exchange rose modestly Thursday, getting no lift from ostensibly bullish weekly storage data.

April natural gas futures on the New York Mercantile Exchange settled 2.7 cents up at \$6.76 per million British thermal units, about their level before the report.

"I don't know at this point what it's going to take to have a meaningful correction (upward)," said Lee Fader, an energy trader at ABN Amro in New York. "It's just kind of stuck in the mud here. If it couldn't pick its head up today, it could slip to new lows."

The weekly storage report by the Energy Information Administration gave only a fleeting boost to prices. The reported withdrawal of 171 billion cubic feet was 20 bcf more than the consensus in a Dow Jones Newswires survey and 11 bcf more than a closely-watched derivatives auction by ICAP Energy and Nymex. It's seen as whittling away at the supply-demand imbalance that has sent prices crashing nearly 60% in the past two and a half months. Nonetheless, it's seen as too-little, too-late to keep storage from ending the heating season bloated well beyond typical levels.

Overall gas in underground storage now stands at 1,972 bcf, nearly 50% higher than the five-year average for this part of the winter and a level that will most likely see the heating season end with a record amount of inventory in four weeks. Storage withdrawals over the five remaining reports would have to average 95 bcf to break below 1.5 tcf by March 31.

Murphy Oil to Restart Meraux Refinery Plant in April

Murphy Oil Corp.' confirmed Thursday that its Meraux plant will restart in April, Dow Jones informs. This means the end of the refining industry's recovery from the 2005 hurricanes is in sight.

ConocoPhillips' Alliance refinery in Belle Chasse, La. and BP Plc's (BP) plant in Texas City, Texas are also expected to return to operation in April following shutdowns forced by Hurricane Katrina at the end of August and Hurricane Rita in late September. Together the three refineries represent 4.8% of total U.S. refining capacity of about 17.135 million barrels a day.

While their removal and extended absence from the fuel supply system has meant high U.S. prices for gasoline, jet fuel and diesel, the plants' return may not have much of an impact on retail prices.

But it could have some marginal fallout on U.S. imports of refined products, which have held about 30% higher from year-earlier levels since the fall. The re-introduction of refined products from Murphy Meraux, BP Texas City and ConocoPhillips Belle Chasse will likely increase domestically available supply and lower wholesale prices just enough to discourage some imports.

In addition, the refineries' return comes when seasonal plant maintenance has taken down a larger than usual amount of processing capacity, partly due to hurricane damage inflicted on a number of the Gulf Coast's heavy concentration of refineries. Analysts who have carried out surveys on the spring maintenance schedule say as much as 2 million barrels a day of capacity will be idled in March.

Price doves in the Organization of Petroleum Exporting Countries may find the 5% addition of U.S. crude demand a convincing argument against those in the group, Venezuela and Iran among them, who want to use typically depressed demand in the second quarter as justification to reduce output. The group meets next on March 8.

According to Dow Jones, the return of these three refineries marks a final step in the turnaround of the crucial Gulf of Mexico refining industry, after the damning double whammy of Hurricanes Katrina and Rita left almost 30% of U.S. capacity offline. Some 6% of oil and gas production in the area is still down and may not all come back.

Murphy Meraux, ConocoPhillips Belle Chasse and Chalmette Refining (a joint venture of ExxonMobil Corp. and Petroleos de Venezuela) are located in the two worst hit Louisiana parishes and sustained the most damage among the 20 refineries in the storms' paths.

BP Texas City suffered little damage from Hurricane Rita but extended its shutdown for months due to safety concerns. Not having experienced a total shutdown in several decades, and in the wake of a major accident last March and a near-miss in July, the company elected to do a thorough safety review prior to restart.

Murphy confirmed Thursday that it planned to restart its 125,000 barrel a day refinery in Meraux in April. Previously, Murphy had specified a resumption in operations early in the second quarter.

Shuttered after Hurricane Katrina hit southeast Louisiana and caused serious flooding and other damage in the region, the refinery has spent six months recovering and replacing damaged equipment.

"The refinery was flooded," said Murphy spokeswoman Mindy West. "The work has been primarily cleaning out and replacing motors, pumps, electronics and other equipment damaged by submersion in water."

Earlier Thursday, a person familiar with operations at the refinery specified early April for the restart. The person said the serious degree of damage meant that normal rates may not be seen immediately.

Partial operations have already resumed at ConocoPhillips' 247,000 barrel a day Alliance refinery in Belle Chasse, La., with a full resumption expected around the end of the first quarter.

BP hasn't given a specific restart date for its 460,000 barrel a day Texas City refinery, but several people familiar with the plant and its safety review expect resumption in operations in late March or early April.

Chevron Announces Major Oil Sands Leases Acquired in Canada

Chevron Corporation announced on Thursday that it has acquired five heavy oil leases in the Athabasca region of northern Alberta. The leases comprise more than 180,000 acres and possess an estimated 7.5 billion barrels of oil in place.

"Chevron is one of the world's leading companies in developing heavy oil, and this opportunity expands our efforts to develop high-quality, large-scale resources to enhance our production growth profile," said George Kirkland, Chevron Corporation's executive vice president, Upstream and Gas. "Our goal is to lead the industry in the selection and execution of major capital projects, and we are excited by the opportunity to build on our position in the Canadian oil sands."

Alex Archila, president of Chevron Canada Limited, added: "This acquisition places Chevron in an excellent position to pursue in situ oil sands development. It provides an opportunity to build upon our existing thermal and oil sands knowledge and capabilities."

Chevron already is active in the Canadian oil sands. The company is a 20 percent joint venture participant in the Athabasca Oil Sands Project (AOSP), which includes the Muskeg River Mine and the Scotford Upgrader. AOSP produces approximately 155,000 barrels per day. Since opening in 2003, AOSP has produced more than 100 million barrels of bitumen.

The new leases are approximately 20 kilometres from Fort Mackay in northern Alberta, and 24 miles south west of AOSP. The resource has the potential for recovery using Steam Assisted Gravity Drainage (SAGD), a proven in situ technology that uses steam and horizontal drilling to extract the bitumen. Two other companies will each have the right to elect to acquire a 20 percent working interest in these leases.

Source: Dow Jones Newswires

PriceLine Daily is published by Enerdata Ltd., 86 Ringwood Drive, Suite 201, Stouffville, Ontario, Canada L4A 1C3. Tel: 905-642-8167. Fax: 905-642-5287. World Wide Web Site: www.enerdata.com. E-mail: enerdata@inforamp.net or publications@enerdata.com.

An annual subscription to PriceLine Daily costs \$1350.00 for E-Mail or Internet service. Canadian customers add GST only.

© The contents of this publication are copyright. Reproduction in whole or in part by any means without the written permission of the publisher is forbidden.

The information contained in PriceLine Daily is obtained from sources considered to be reliable. However, the information contained herein is not guaranteed with respect to its accuracy or completeness. Enerdata Ltd. assumes no responsibility for either the direct or indirect use of the information contained herein.

Intra-Alberta Daily Price Index Summary Sheet

Same Day Price Index

Month		Price (\$/GJ)				Avg. Price US\$/MMBTu	Volume	# of Trans.	Exchange Rate
		High	Low	Close	Weighted Ave.				
March 2006									
Wednesday	1	5.9200	5.7900	5.9100	5.8699	5.4474	1560.1	209	0.8796
Thursday	2	6.0250	5.8400	5.9300	5.9444	5.5391	1428.3	205	0.8832
Friday	3								
Weekend#									
Saturday	4								
Sunday	5								
Monday	6								
Tuesday	7								
Wednesday	8								
Thursday	9								
Friday	10								
Weekend#									
Saturday	11								
Sunday	12								
Monday	13								
Tuesday	14								
Wednesday	15								
Thursday	16								
Friday	17								
Weekend#									
Saturday	18								
Sunday	19								
Monday	20								
Tuesday	21								
Wednesday	22								
Thursday	23								
Friday	24								
Weekend#									
Saturday	25								
Sunday	26								
Monday	27								
Tuesday	28								
Wednesday	29								
Thursday	30								
Friday	31								
1. Tot./Wtd. Avg.**		6.0250	5.7900	5.9300	5.9055	5.4912	2988.4	414	
2. Tot./Wtd. Avg.^^		6.0250	5.7900	5.9300	5.9055	5.4912	2988.4	414	
3. Tot./Wtd. Avg.^A		6.0250	5.7900	5.9300	5.9055	5.4912	2988.4	414	
4. Tot./Wtd. Avg.^*		6.0250	5.7900	5.9300	5.9055	5.4912	2988.4	414	
5. Tot./Wtd. Avg.**		6.0250	5.7900	5.9300	5.9055	5.4912	2988.4	414	

**Includes weekend deals, #Weighted average of NGX "W" (Fri, Sat, Sun) instruments. ^Excludes all weekend deals. ^^Includes weekend deals and excludes Sat Sunday and statutory Friday or Monday deals. ^* Excludes individual Saturday, Sunday, and Statutory Holiday deals that fall in conjunction with the weekend - number is used instead as a proxy for each of the Weekend days and statutory holidays. **Excludes individual Friday, Saturday, Sunday, and Statutory Holiday deals that fall in conjunction with the weekend - the Weekend number is used instead as a proxy for each of these days.

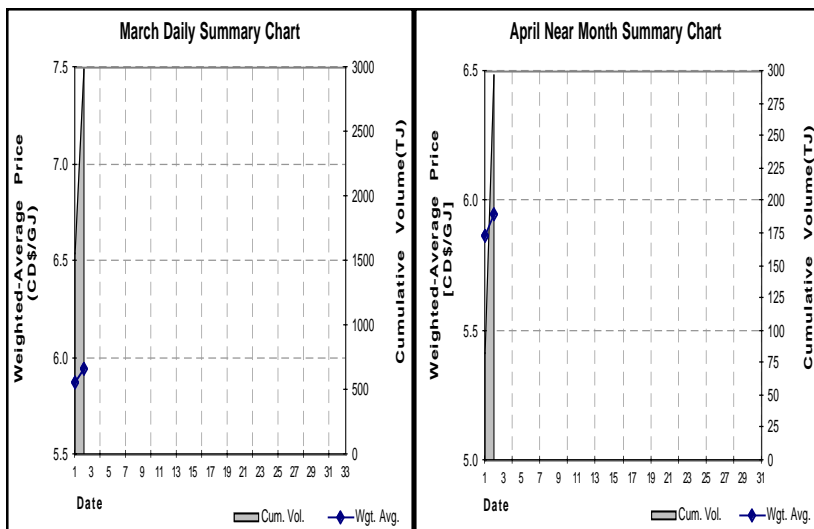
Near Month Price Index

Date	High	Low	Close	Weighted Ave.	Volume	# of Trans.
1-Mar	5.9200	5.8000	5.9780	5.8643	83.0	25
2-Mar	6.0300	5.8100	6.0150	5.9512	213.6	50
3-Mar						
4-Mar						
5-Mar						
6-Mar						
7-Mar						
8-Mar						
9-Mar						
10-Mar						
11-Mar						
12-Mar						
13-Mar						
14-Mar						
15-Mar						
16-Mar						
17-Mar						
18-Mar						
19-Mar						
20-Mar						
21-Mar						
22-Mar						
23-Mar						
24-Mar						
25-Mar						
26-Mar						
27-Mar						
28-Mar						
29-Mar						
30-Mar						
31-Mar						
Total/Wtd. Avg.	6.0300	5.8000		5.9269	296.6	75

Source: Natural Gas Exchange

AECO/NIT One Month Forward Prices		
Month	US\$/MMBTu	C\$/GJ
Apr	5.77	6.46
May	6.22	7.21
Jun	6.39	7.41
Jul	6.57	7.61
Aug	6.69	7.75
Sep	6.77	7.85
Oct	6.88	7.97
Nov	7.91	9.16
Dec	8.86	10.26
Jan-07	9.51	11.00
Feb	9.51	11.01
Mar	9.33	10.78
Apr	7.69	8.78
May	7.52	8.59
Jun	7.58	8.65
Jul	7.65	8.74
Aug	7.72	8.81
Sep	7.74	8.84
Oct	7.80	8.91
Nov	8.41	9.60
Dec	8.95	10.22
Jan-08	9.36	10.69
Feb	9.36	10.69
Mar	9.20	10.50

Source: Canadian Enerdata Ltd.



NGX Express Transport Spot Day Price Index							
March 2006 Clearing Date	Volume (TJ)	Number of Transactions	Price (C\$/GJ)			Avg. Price US\$/MMBtu	
			Low	High	Average		
Wednesday	1	378.7	23	0.1000	0.1250	0.1150	0.1066
Thursday	2	206.2	12	0.0800	0.0900	0.0840	0.0780
Friday	3	110.5	9	0.0700	0.0900	0.0801	0.0746
WKD Sat-Mon							
Tuesday	7						
Wednesday	8						
Thursday	9						
Friday	10						
Wkd Sat-Mon							
Tuesday	14						
Wednesday	15						
Thursday	16						
Friday	17						
Wkd Sat-Mon							
Tuesday	21						
Wednesday	22						
Thursday	23						
Friday	24						
Wkd Sat-Mon							
Tuesday	28						
Wednesday	29						
Thursday	30						
Friday	31						
Total	695.4	44		0.0700	0.1250	0.0930	0.0864

WKD Deals done on Friday to cover Saturday, Sunday and Monday and any statutory holidays that fall in conjunction with the weekend. @Denotes statutory holiday.

Source: Natural Gas Exchange

NGX AECO Next Day Price Index							
March 2006 Clearing Date	Volume (TJ)	Number of Transactions	Price (C\$/GJ)			Avg. Price US\$/MMBtu	
			Low	High	Average		
Wednesday	1	825.5	96	5.8300	6.0500	5.8882	5.4588
Thursday	2	897.1	109	5.7600	5.9250	5.8522	5.4310
Friday	3	606.9	73	5.8100	6.0400	5.9318	5.5274
WKD Sat-Mon							
Tuesday	7						
Wednesday	8						
Thursday	9						
Friday	10						
Wkd Sat-Mon							
Tuesday	14						
Wednesday	15						
Thursday	16						
Friday	17						
Wkd Sat-Mon							
Tuesday	21						
Wednesday	22						
Thursday	23						
Friday	24						
Wkd Sat-Mon							
Tuesday	28						
Wednesday	29						
Thursday	30						
Friday	31						
Total	2329.5	278		5.760	6.050	5.8907	5.4724

WKD Deals done on Friday to cover Saturday, Sunday and Monday and any statutory holidays that fall in conjunction with the weekend. @Denotes statutory holiday.

Source: Natural Gas Exchange

NGX Union Dawn Spot Day Price Index							
March 2006 Clearing Date	Volume (BBtu)	Number of Transactions	Price (US\$/MMBtu)			Avg. Price C\$/GJ	
			Low	High	Average		
Wednesday	1	281.3	42	6.5000	6.7100	6.5780	7.0954
Thursday	2	569.0	59	6.4500	6.6650	6.5962	7.1078
Friday	3	621.8	71	6.5800	6.7600	6.6812	7.1700
WKD Sat-Mon							
Tuesday	7						
Wednesday	8						
Thursday	9						
Friday	10						
Wkd Sat-Mon							
Tuesday	14						
Wednesday	15						
Thursday	16						
Friday	17						
Wkd Sat-Mon							
Tuesday	21						
Wednesday	22						
Thursday	23						
Friday	24						
Wkd Sat-Mon							
Tuesday	28						
Wednesday	29						
Thursday	30						
Friday	31						
Total	1472.1	172		6.450	6.760	6.6185	7.1244

WKD Deals done on Friday to cover Saturday, Sunday and Monday and any statutory holidays that fall in conjunction with the weekend. @Denotes statutory holiday.

Source: Natural Gas Exchange

NGX Station #2 Daily Spot Price Index							
March 2006 Clearing Date	Volume (TJ)	Number of Transactions	Price (C\$/GJ)			Avg. Price US\$/MMBtu	
			Low	High	Average		
Wednesday	1	142.0	23	5.4500	5.5200	5.4635	5.0651
Thursday	2	141.7	21	5.2800	5.4000	5.3051	4.9233
Friday	3	226.8	37	5.3500	5.5500	5.4707	5.0977
WKD Sat-Mon							
Tuesday	7						
Wednesday	8						
Thursday	9						
Friday	10						
Wkd Sat-Mon							
Tuesday	14						
Wednesday	15						
Thursday	16						
Friday	17						
Wkd Sat-Mon							
Tuesday	21						
Wednesday	22						
Thursday	23						
Friday	24						
Wkd Sat-Mon							
Tuesday	28						
Wednesday	29						
Thursday	30						
Friday	31						
Total	510.5	81		5.280	5.550	5.4131	5.0287

WKD Deals done on Friday to cover Saturday, Sunday and Monday and any statutory holidays that fall in conjunction with the weekend. @Denotes statutory holiday.

Source: Natural Gas Exchange

NGX Emerson Spot Price Index							
March 2006 Clearing Date	Volume (TJ)	Number of Transactions	Price (CAD\$/GJ)			Avg. Price US\$/MMBtu	
			Low	High	Average		
Wednesday	1	204.3	12	5.8500	6.0800	6.0136	5.5751
Thursday	2	113.1	8	5.8800	6.0500	5.9820	5.5515
Friday	3	53.4	5	6.0300	6.1100	6.0694	5.6556
WKD Sat-Mon							
Tuesday	7						
Wednesday	8						
Thursday	9						
Friday	10						
Wkd Sat-Mon							
Tuesday	14						
Wednesday	15						
Thursday	16						
Friday	17						
Wkd Sat-Mon							
Tuesday	21						
Wednesday	22						
Thursday	23						
Friday	24						
Wkd Sat-Mon							
Tuesday	28						
Wednesday	29						
Thursday	30						
Friday	31						
Total	370.8	25		5.850	6.110	6.0217	5.5941

WKD Deals done on Friday to cover Saturday, Sunday and Monday and any statutory holidays that fall in conjunction with the weekend. @Denotes statutory holiday.

Source: Natural Gas Exchange

NGX Iroquois Daily Spot Gas Price Index							
March 2006 Clearing Date	Volume (MM)	Number of Transactions	Price (USD\$/MM)			Avg. Price (C\$/MM)	
			Low	High	Average		
Wednesday	1	68.5	7	7.8500	8.3000	7.9715	9.0719
Thursday	2	84.6	17	7.8000	8.1500	8.0032	9.0987
Friday	3	94.0	17	8.3000	9.0000	8.7048	9.8560
WKD Sat-Mon							
Tuesday	7						
Wednesday	8						
Thursday	9						
Friday	10						
Wkd Sat-Mon							
Tuesday	14						
Wednesday	15						
Thursday	16						
Friday	17						
Wkd Sat-Mon							
Tuesday	21						
Wednesday	22						
Thursday	23						
Friday	24						
Wkd Sat-Mon							
Tuesday	28						
Wednesday	29						
Thursday	30						
Friday	31						
Total	247.1	41		7.800	9.000	8.2265	9.3422

WKD Deals done on Friday to cover Saturday, Sunday and Monday and any statutory holidays that fall in conjunction with the weekend. @Denotes statutory holiday.

Source: Enerdata Ltd. Volume and Price Survey

Canadian Enerdata Gas Storage Survey* (Bcf)					
Region	This Week 24-Feb	Last Week 17-Feb	Diff. (Bcf)	% Full	Last Year (Bcf)
East	131.4	143.9	-12.6	52.35%	92.5
West	140.6	149.1	-8.5	49.89%	76.6
Total	272.0	293.0	-21.0	51.05%	169.1

Source: Canadian Enerdata Ltd.

Survey does not include 25 bcf of storage at the Alberta Hub in Western Canada.

*Working gas in storage including LNG, Canadian operators of storage and/or Canadian companies contracting storage in the U.S and Canada.

EIA U.S. Storage Survey* (Bcf)					
Region	This Week 24-Feb	Last Week 17-Feb	Diff. (Bcf)	Last Year (Bcf)	5-Yr Avg. (Bcf)
Producing (1)	623	670	-47.0	533	423
East(2)	1078	1174	-96.0	850	713
West(3)	271	299	-28.0	226	195
Total	1972	2143	-171.0	1628	1331

Source: Energy Information Administration

(1) Includes Texas, Oklahoma, Kansas, New Mexico, Louisiana, Arkansas, Mississippi.

(2) All states east of the Mississippi River except Mississippi, plus Iowa, Nebraska and Missouri.

(3) All states west of the Mississippi River except the Producing Region and Iowa, Nebraska and Missouri.